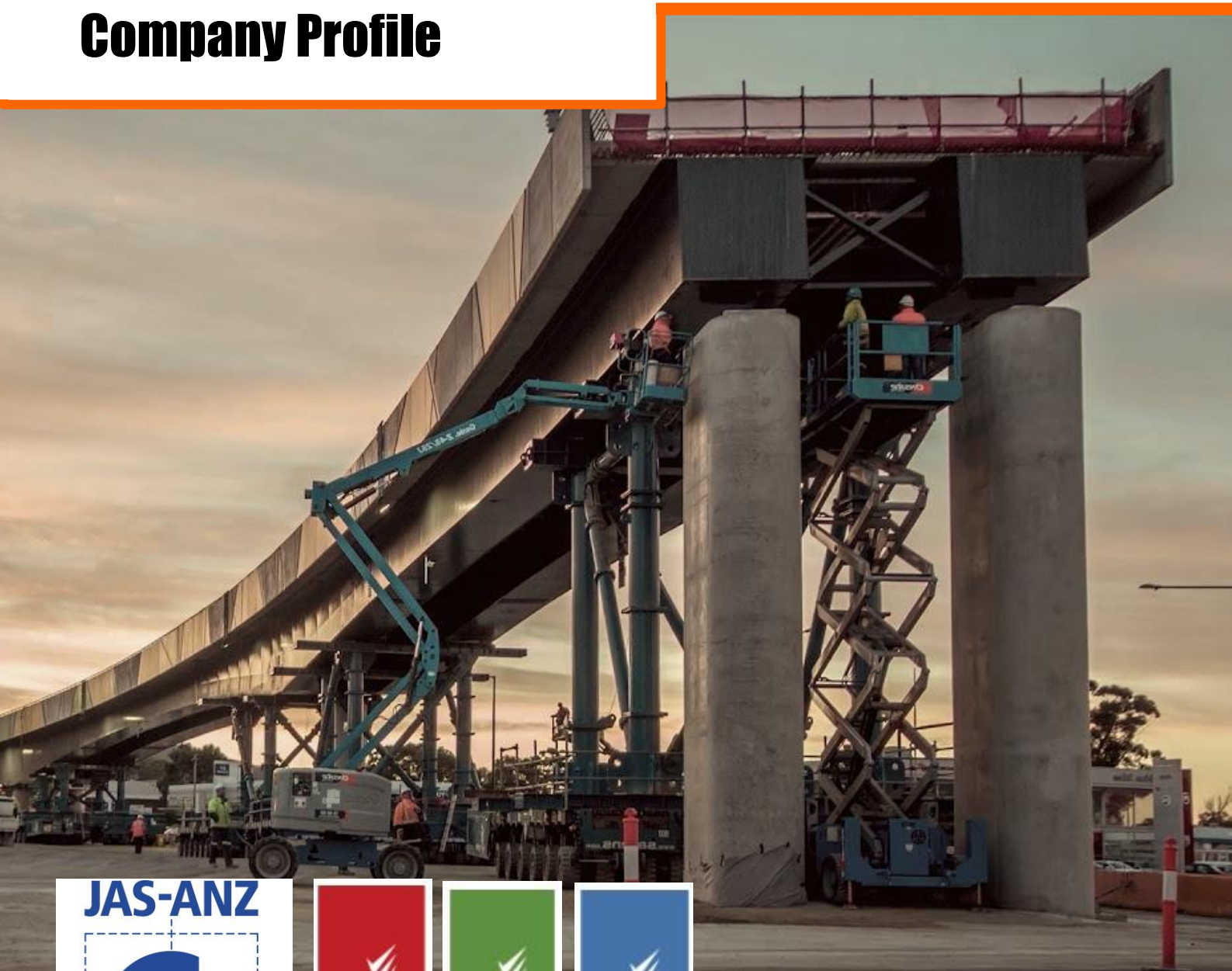


# JAMTEK STRUCTURAL PTY LTD

## Company Profile



**JAMTEK STRUCTURAL PTY LTD**  
**P** 08 8244 0023  
**D** 18 Myer Ct Beverley SA 5009  
**E** [accounts@jamtekstructural.com.au](mailto:accounts@jamtekstructural.com.au)  
**W** [www.jamtekstructural.com.au](http://www.jamtekstructural.com.au)

# Overview

Jamtek Structural Pty Ltd is a civil construction and building company.

In the past, Jamtek has acted as a specialised subcontractor to Tier 1 builders, providing expertise in formwork, reinforcement, concrete and heavy-duty reinforced concrete.

Jamtek Structural now offers complete civil and structural packages integrating our core in-situ concrete works with earthworks, supply and installation of structural steel and/or precast concrete, caulking, jointing, applied coatings and Project Management.

Additionally, we can undertake simple and complex commercial building projects, bridge and road construction.

We draw on our own expertise and add specialised trades from our portfolio of subcontractors as needed.

We can manage the design, approval, build and close out process to hand over a finished product.

With vast and extensive experience in multiple industries, you can trust Jamtek Structural to complete your task.

# History

After working with various construction companies on iconic South Australia and interstate projects, Steve Plamenac founded Jamtek Structural in 2004.

From humble beginnings as a sole proprietor, Jamtek Structural steadily grew into one of South Australia's leading civil construction subcontractors.

In 2006, Jamtek Structural registered with ASIC as a proprietary limited Australian company.

Jamtek Structural has continued to expand, building an impressive list of clients and delivering a diverse range of infrastructure projects.

Jamtek Structural continues to provide innovative, quality construction solutions for all forms of construction projects.



# Capability

## Structural Construction

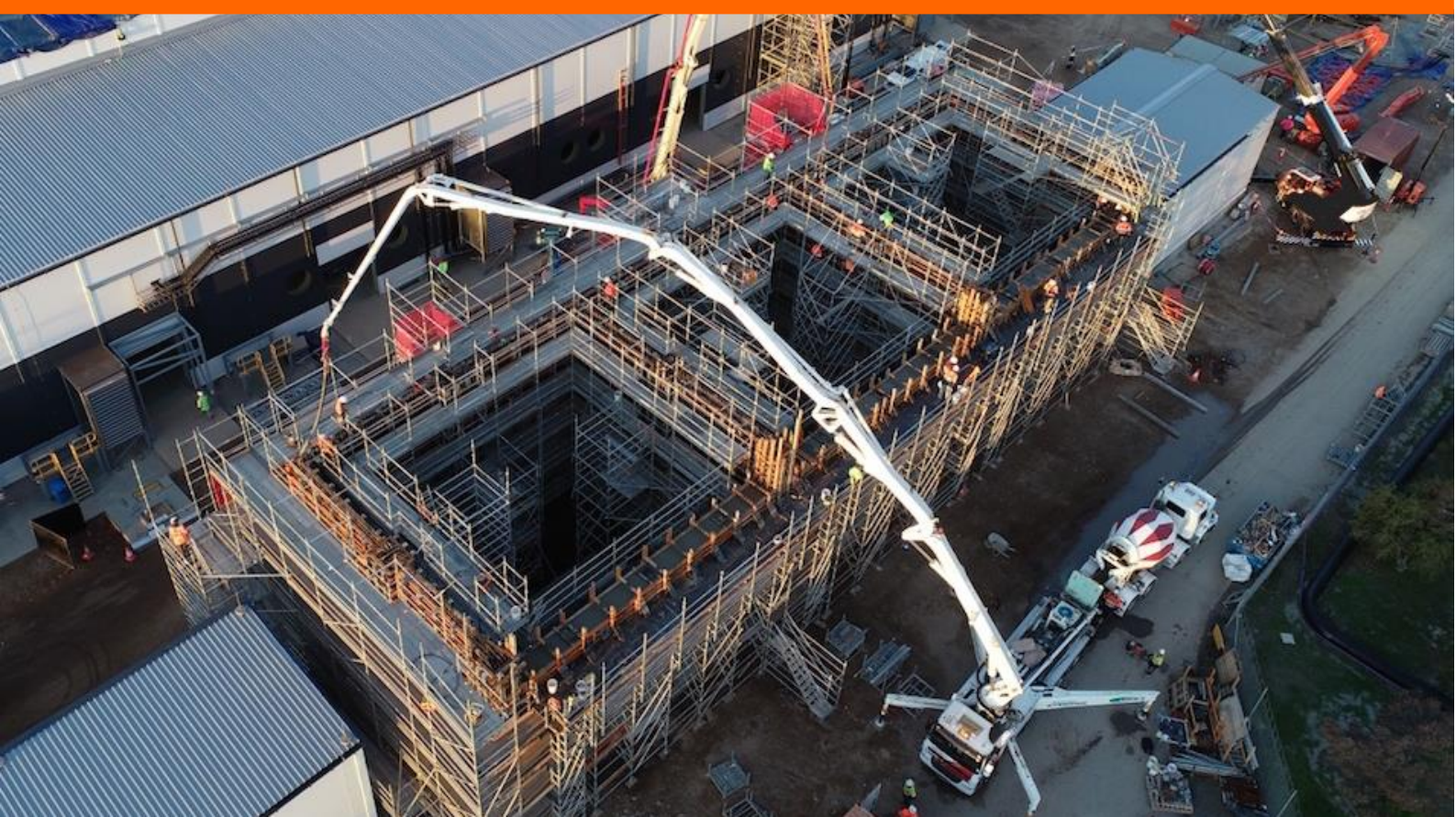
- Advanced Formwork (Over 10m)
- Heavy Reinforced Concrete
- Concrete Supply Management
- Reinforced Steel Supply Management
- Works Over Water
- Precast Concrete Installation
- Elevated Pours
- Water Retaining Structures
- Cranage
- Structural Steel Supply & Management
- Structural Steel Placement
- Aircraft Grade Concrete

## Earthworks

- Bulk Excavation
- Detailed Excavation
- Geotechnical Engineering
- Surveying
- Non-Destructive Digging
- Shoring Systems
- Temporary Works Engineering
- Advanced Shoring
- GPS and UTS

## Road Works

- Traffic Management
- Kerb and Gutter
- Profile and Replace
- Culvert Construction and Install
- Storm-Water Systems
- Road Pavement Construction
- Supply and Place Asphalt Concrete
- Road Diversion
- Spray Seal
- PMB Repairs
- Guard Rail
- Road and Bridge Structures



# People

Jamtek's founder and director, Steve Plamenac has worked in the construction industry for over 30 years. Steve began his career in the industry as an apprentice with Boulderstone. Steve continues to bring drive and innovation to the company through his hands-on approach to running the business. Through Steve's guidance, Jamtek have helped delivered some of Adelaide's largest infrastructure projects.



# Industry

Jamtek Structural has undertaken projects across a broad spectrum of industries including:



## Water



## Power



## Healthcare



## Mining



## Education



## Road



## Defence





## **Safely Delivering Projects**

Jamtek Structural are proud of our safety record.

Safety is our number one priority from the time we submit the works proposal through to execution and close-out.

All employees are industry and project inducted and provided with all relevant training. Supervisors are trained in all relevant Australian Standards and they always ensure this is our minimum standard when supplying works.

We have received ISO 45001 and ISO 14001 certification for our safety and environmental management systems.

Our safety management system includes project specific Safety Management Plans, Job Safety & Environmental Analysis, induction and toolbox records, incident notification and investigation and extensive work permits, daily pre-starts and procedures.

## **Delivering Quality Projects**

All works are carried out to the highest quality standards. Jamtek Structural has a quality-minded culture meaning that it's at the forefront of everything we do.

This includes interpreting and understanding drawings and job specifications

Our QMS is certified against ISO 9001. In a similar manner to our approach to safety, our quality management system includes a project Quality Management Plan, the development and implementation of Inspection and Test Plans, checklists and Corrective Action Reports.

Jamtek dedicates Site Engineers to all jobs. Pre and post work inspections are done with both the supervisors and engineers.



# Delivering Projects within Programme

Jamtek Structural realise that time is money!

It's not enough to deliver a project within budget; it must be done within the committed time frame.

We can work with a client to produce a programme for the works.

Alternatively, Jamtek can provide a Gantt Chart for the client's approval.

Jamtek will do whatever is necessary to deliver a project within the client's time frame.

When it comes to programme, Jamtek Structural will be accountable to our client.

## Project Management

As mentioned earlier, our core works are formwork, reinforcement, concrete, works in civil construction.

However, we do offer 'turn key' solutions where we project manage a clearly defined portion, and in some cases, your entire scope.

With our experience in the industry we have successfully coordinated all aspects of civil construction projects, handing our client the finished product.

This gives the client the ultimate control and comfort over safety, quality, programme and budget.

# Modernising Road Maintenance

Jamtek Structural for the duration of 2021, have been assisting the Department of Infrastructure and Transport in the repair of their road structures and bridges. The locations of the repairs have been located throughout South Australia, from Mount Gambier and Metro Adelaide through to Renmark. These repairs have required Jamtek to work on National Highways, in remote locations and in active waterways.

The majority of these structures have been 30+ years old with one of the projects being the oldest still functioning bridge in South Australia.

Closely working with our client has seen the instigation of community notifications, community involvement and coordination with major and minor stakeholders.





# St Peters College Big Quad Rejevanation

Jamtek Structural was contracted to instigate the supply and placement of approximately 780m<sup>3</sup> of concrete, this included footings, a stair well, concrete decks and slabs on ground. In addition to these works, the project required placement of approximately 130m of underpinning to Big Quad East, Big Quad South and Big School Room. The works involved manual, non-mechanical excavation of approximately 250 ton of material. The underpinning and placement of concrete was in the vicinity and underneath the circa 1800 buildings, this required extra care from Jamtek Structural to ensure damage to the heritage buildings was prevented.

St Peter's College Big Quad heritage buildings will be transformed to provide more flexible, modern and diverse learning spaces to match contemporary educational needs.

Included in the redevelopment is the creation of a home for the CEO-in-residence program and a purpose-built House hub, plus the transformation of Big School Room into a modern learning space that celebrates its history as the oldest classroom still in use in Australia.



# State Sports Park's Home of Football

Jamtek Structural completed all in-situ structural concreting at the State Sports Park's Home of Football. The project required the excavation of 2300 tons of material, supply and placement of 150 tons of reinforced steel and the supply and placement of 1900m<sup>3</sup> of concrete.

This new facility located within the State Sports Park Precinct at Gepps Cross will be a state-of-the-art, international-standard playing field and the home of Football SA.

The integrated facility is a key component in the SA Sports and Recreation Infrastructure plan and will cater to all levels of participation from grassroots to elite competitions.

The ground can hold 5000 people, including a 1000-person capacity grandstand, 3 synthetic pitches and 10 outdoor futsal pitches. This project will form part of the South Australian government proposal to host official games for the upcoming 2022 Women's World Cup, recently awarded to Australia and New Zealand.



# Whyalla Secondary College

Jamtek Structural completed all in-situ structural concreting at Whyalla Secondary College. The extensive scale of the project saw Jamtek provide concrete footings, slabs at ground level and first and second level, decks, lift shafts, stairs and stair wells. The original scope of the project is substantiated by Jamtek's supply and placement of 6,500m<sup>3</sup> of concrete and the supply and placement of 660 tonnes of reinforcement.

The \$100 million state of the art secondary school will accommodate 1500 students from years 7 to 12. This includes 48 inclusive places for students with disability.

The new school is located on Nicolson Avenue in Whyalla Norrie in between the UniSA and TAFE campuses, forming an education precinct to provide students with strong links to further study options.

The school will replace Whyalla's 3 existing high school campuses - Edward John Eyre High, Whyalla High and Stuart High.

Significant stakeholder consultation was undertaken by the department to inform plans for the school. The new school has been designed to reflect contemporary education environments and will focus on supporting future skills needs that lead to jobs.



# Torrens Island Power Station Expansion

The \$300m expansion of the Barker Inlet Power Station was a major project in South Australia completed to mining safety standards for asset owners AGL. The project was commissioned to take off-line some of the existing aging turbines by replacing them with new Wartsila engines.

The new Barker Inlet Power Station is a 211MW smart energy generation plant located 18km from the Adelaide central business district (CBD) in Torrens Island, Australia. The power plant site lies beside the existing Torrens Island power station.

Jamtek Structural's involvement included supply and placement of the power stations foundations. This consisted of approximately 10,000 m<sup>3</sup> of concrete placement on an accelerated construction programme including 24/7 work hours, with a structural design completed in Finland.

In addition to the foundations Jamtek was commissioned to supply and place pavement around the location. This included approximately 2,000m<sup>2</sup> of asphalt pavement, guard railing, kerbing and ramps.



# Southern Expressway Duplication

The \$407.5 million duplication of the Southern Expressway is a key part of the development of Adelaide's north-south corridor and delivers an 18.5-kilometre multi-lane, two-way expressway between Bedford Park and Old Noarlunga. The project was complete in 2014 by Lend Lease (formerly Baulderstone Abi Group Joint Venture).

Jamtek Structural were engaged to initially construct the extensions to the three existing multi-steel plate culverts for storm water and the shared user path to transverse under the roadway. Jamtek were then further engaged to construct the Seacombe Road and Sturt River bridges. The Seacombe Road bridge was particularly difficult to build as it required the propping and demolition of the existing abutment and bridge deck in order to extend its length.



# New Royal Adelaide Hospital

The new Royal Adelaide Hospital is Australia's most advanced hospital and the largest infrastructure project in South Australia's history. The hospital was named the third most expensive building in the world in 2015 at \$1.85 billion. Leighton Contractors and Hansen Yuncken were the design and construct joint venture to build the project in a Public Private Partnership that commenced construction in 2010 and complete in 2016.

Jamtek Structural were initially engaged to complete the formwork, reinforcing and concrete works to the ground slabs, culverts, pile caps, retaining walls and dock levellers in Zone 1, 2 and 3. This scope quickly grew through numerous variations (170+) requested by the client that doubled Jamtek's original contract value and included additional works such as construction of further ground slabs in Zone 5, external concrete apron slabs, the western entry bridges, shotcrete walls, shear walls, columns, pile remediation and extension, in-situ curved road barriers, plant plinths, internal kerbs and bunds, ramps, stairs, scaffolding, capping beams, pile breaking, suspended slabs, grouting, internal courtyard seating and numerous labour hire works. This resulted in the initial 9-month contract being extended to 3 years.

In total, Jamtek completed over 56,000m<sup>2</sup> of slabs and over 12,000m<sup>3</sup> of concrete placement.



# Gallipoli Underpass

The Gallipoli Underpass project was the State Governments first step to transform South Road into a continuous non-stop route. The Gallipoli Underpass project was awarded to the Adelaide Connect Project Team comprised of a Thiess and Leed Joint Venture. The project started in mid-2007 and ended early 2009 at a cost of \$118 million.

Jamtek Structural were engaged to complete the FRP package for the bridges, pump station, pits, road barriers and installation of precast panels.



# Kanmantoo Mine

The Kanmantoo Copper Mine is located in the Adelaide Hills region of South Australia. The mine started operations back in 1970 and work by Hillgrove Resources in 2004 has proved up an additional Indicated and Inferred Mineral Resource of 31.3 million tonnes.

Jamtek Structural were engaged to complete formwork, steel fixing and concrete works to various items including the mine crusher, footings and columns.





# Beverley Depot

In 2014 Jamtek utilised its impressive skillset to construct its new office/warehouse, Jamtek now operates out of its 1000m2 multi storey, multi-function depot. The project included everything from tilt up panels, plumbing and electrical through to fencing and landscaping.



# Katarapko Spillway

In 2019 Jamtek delivered the structural concreting package for the Katarapko Spillway for SA Water. This project required strict tolerances and a fast-paced timeline. Jamtek delivered a high-quality product within our designated timelines. The works were conducted within the Murray River National Park, which required vigilant cultural and environmental monitoring.

The project was awarded the CCF SA Winner for Project Value \$30-\$75 million



# RAAF Base Edinburgh ECB

In 2018 Jamtek completed a structural concreting package for the Department of Defence. This project required strict tolerances, defence security access and a careful coordination of contractors and suppliers.

Jamtek Structural were engaged to complete the formwork, steel fixing and concrete works



# Other Projects

Jamtek Structural has been part of many landmark South Australian and Australian projects. We have successfully delivered works within projects including:

- Adelaide Biodiesel Plant
- Adelaide Desalination Plant
- Bakewell Bridge Underpass
- Brick Kiln Road Treatment Works Upgrade
- Castlemaine Spillway
- City Green Alliance
- Coast-to-Coast Light Rail
- Darlington South Road Upgrade
- Gateway South- South Road Upgrade
- Happy Valley Filtration Holding Tank Upgrade
- Hargrave Street Stormwater Pump Station
- Hope Valley Holding Tank Extension
- Langhorne Creek Pipeline and Pump Station
- Northern Expressway
- Northern Interconnector Auxiliary Works
- Port River Expressway
- Regional Rail Bridges (Kingston and Lyndoch)
- Robinvale Bridge
- Scotland Road Bridge
- South Road Superway
- Torrens to Torrens- South Road Upgrade
- Wattle Park Pump Station Upgrade
- West Beach Sewerage Treatment Works Upgrade